
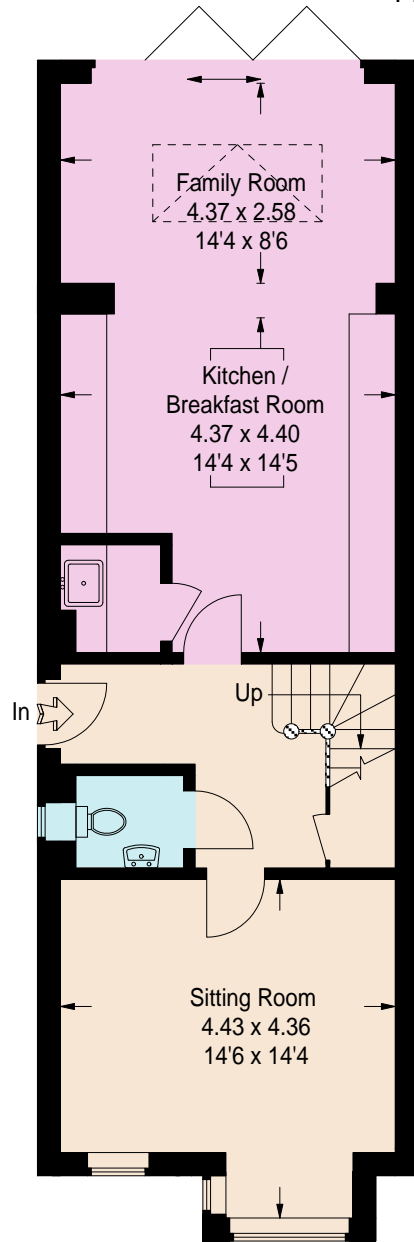
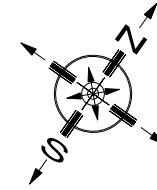


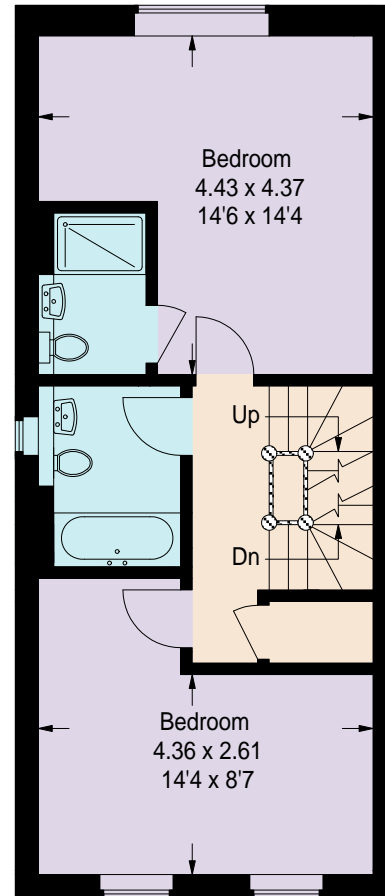
Denby Road, Cobham, KT11

Approximate Gross Internal Area
 Plot 1 = 148 sq m / 1593 sq ft (Excluding Eaves Storage)

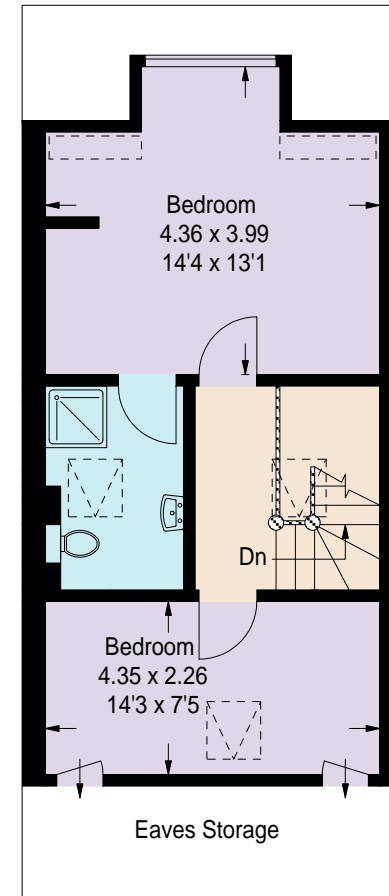
 = Reduced headroom below 1.5 m / 5'0"



Ground Floor



First Floor



Second Floor

FLOORPLANZ © 2013 0845 6344080 Ref 111671

This plan is for layout guidance only. Not drawn to scale unless stated. Windows & door openings are approximate. Whilst every care is taken in the preparation of this plan, please check all dimensions, shapes & compass bearings before making any decisions reliant upon them.